

PART OF N. 1/2 OF SECTION 22, T.6 N., R.1 W., S.L.B. & M.
ROLLING HILLS ADDITION NO. 6

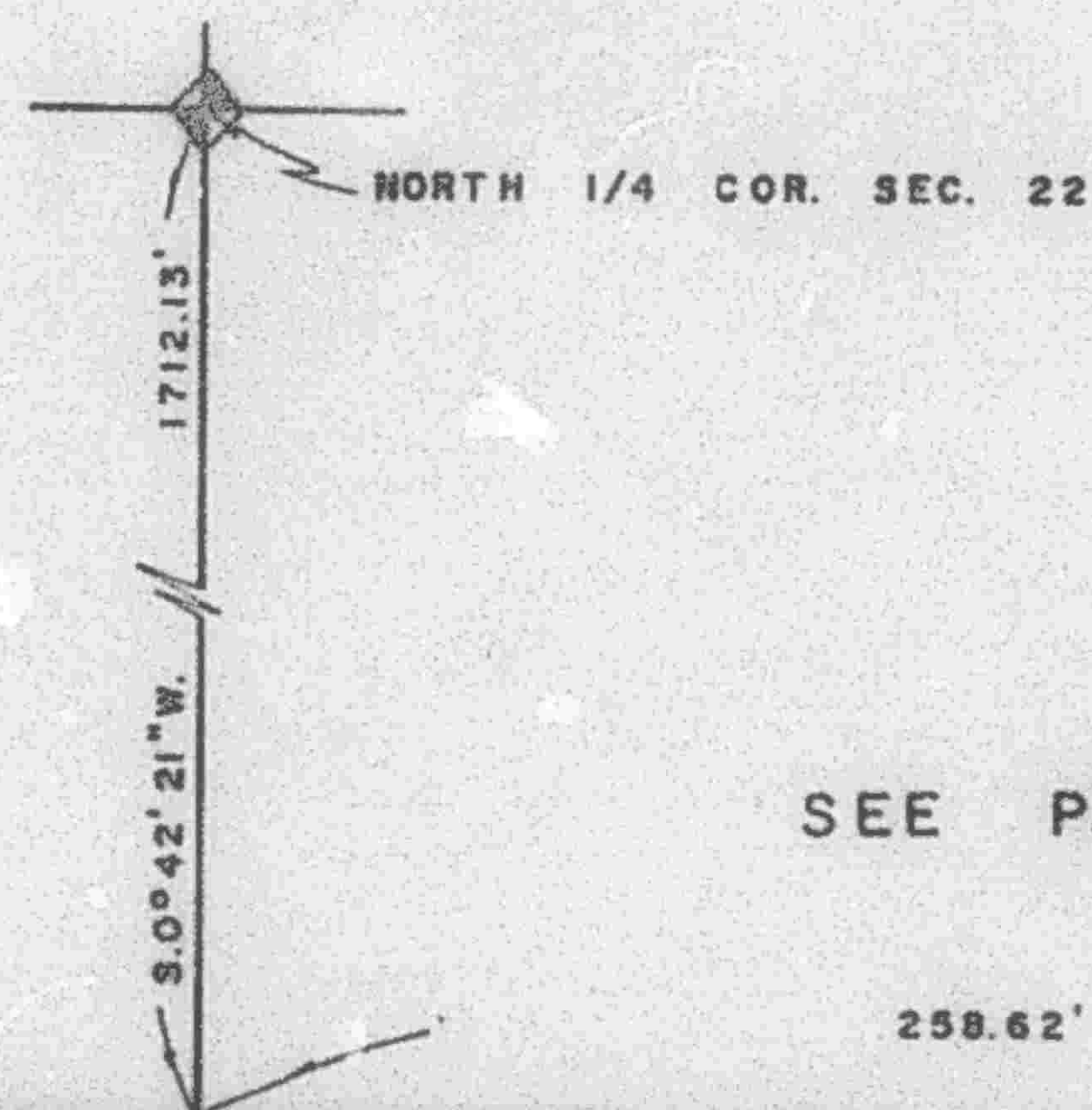
140

TAXING UNIT: 25

LOTS 6 - 17
 IN OGDEN CITY
 SCALE 1" = 50'

PREFIX: 13 - 140

EXCEPT WHERE OTHERWISE SHOWN
 ALL LOTS ARE OWNED BY
 CURTIS T. HISLOP, ET AL.

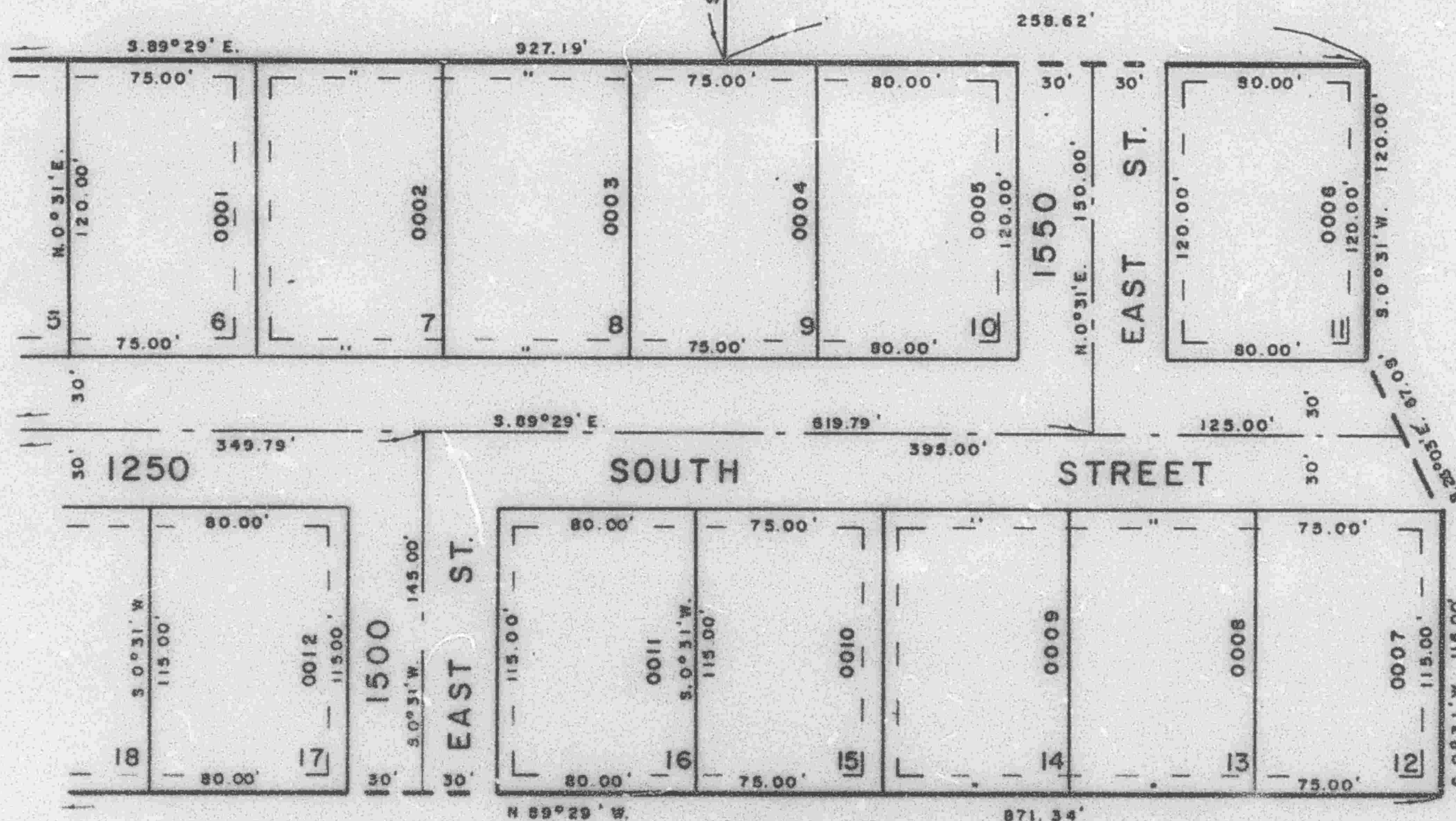


SEE PAGE 56 - 1

SEE PAGE 55

SEE PAGE
 139

SEE PAGE 45



SEE PAGE 56-1

SEE PAGE 45

7' UTILITY & DRAINAGE ESMTS.
 EACH SIDE OF PROPERTY LINE
 AS INDICATED BY DASHED LINES

FOR COMPLETE ENG. DATA
 SEE ORIG. DED. PLAT IN
 BOOK 17, PAGE 57